

# GLACIÄR RM

## Next Generation Room Monitoring



Ideal for hotel rooms, offices and residential properties

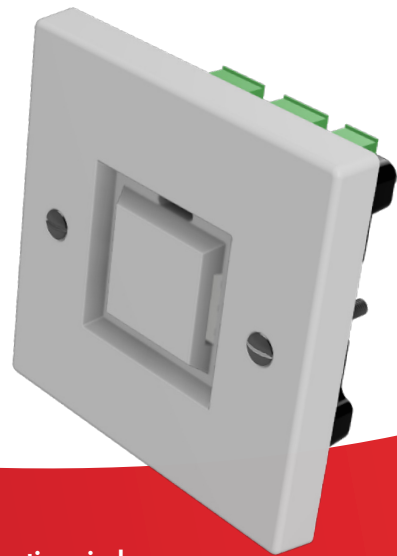
- Fits inside standard electrical back box
- Reliable and accurate NDIR sensor
- Modbus RS485 interface
- Wi-Fi access point for setup and maintenance
- Helps achieve the requirements of EN378



## Reliable Leak Detection for Occupied Spaces

The **GLACIÄR RM** is purpose-built to provide **early refrigerant leak detection** in aesthetic, occupied environments. Leveraging accurate **infrared (NDIR) sensor technology** and smart service features, it is ideal for use with **VRF air conditioning systems** in hotel rooms, offices, apartments, care homes, prisons and light commercial spaces.

The **flushmounted GLACIÄR RM** integrates seamlessly into walls, delivering effective refrigerant detection without compromising room aesthetics. Each unit comes **factory pre-configured** to monitor refrigerant levels safely and discreetly.



## Why choose GLACIÄR RM

- Infrared (NDIR) sensing – superior accuracy and selectivity for R32 and R410a
- Wi-Fi configuration & service – onboard service hotspot enables fast setup and diagnostics via browser
- Non-intrusive design – low-profile installation to complement interior design
- Multi-relay support – two SPDT relays for alarm/fault control
- Internal sounder – 85 dB at 10 cm for audible alarms
- Visual status indicators – multi-color LED shows normal, warning, alarm, or fault conditions
- RS485 Modbus RTU – robust communication with building or HVAC systems



**SIMPLY RELIABLE REFRIGERANT GAS DETECTORS**

[www.samon.com](http://www.samon.com)

Part of **safe monitoring group**

# NEXT GENERATION ROOM MONITORING



## TECHNICAL DATA

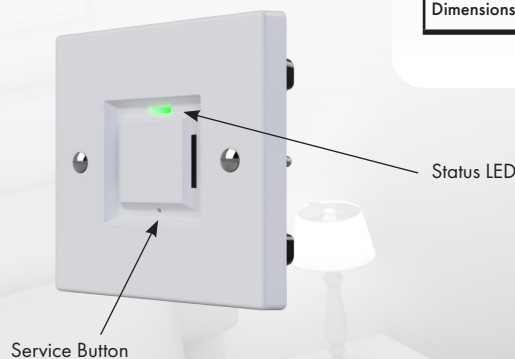
Specifications	
Sensor type	Infrared (NDIR)
Target gases	R32 or R410a (specify at order)
Measurement range	R32: 50% LFL R410a: 7% Vol
Accuracy	±10%
Response time (T90)	≤30 seconds
Power supply	12–24 VDC/VAC, max 3W
Outputs	2 x SPDT relays (1A @ 24VDC)
Interface	Modbus RTU over RS485 + Wi-Fi (service only)
Visual indicators	LED (Red / Green / Orange / Blue)
Audible alert	85 dB buzzer @ 10 cm
Mounting options	Flush (RM)
Protection class	IP21
Dimensions	86 x 86 mm faceplate, 32–38 mm depth

### Easy maintenance

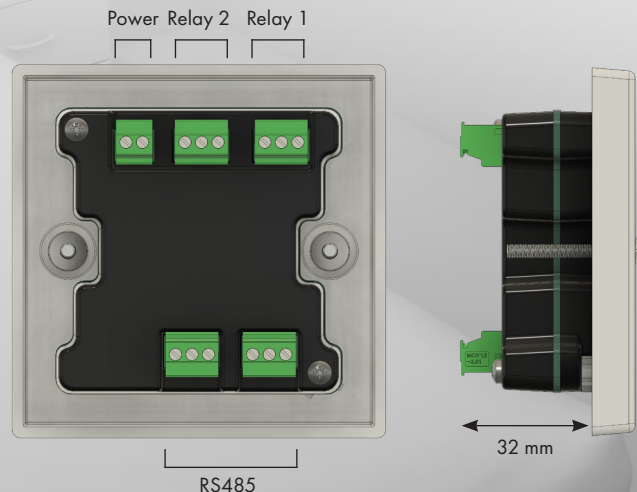
The GLACIÄR RM includes a **built-in WiFi access point**, enabled using the service button on the front of the unit. Once active, any standard web browser on a phone, tablet, or laptop can be used to view operating status, adjust settings, and carry out tests.

The same status information, configuration options, and test functions are also available via the **Modbus RS485 interface**.

The unit is supplied **pre-configured** for most common applications. Where changes are needed, settings can be adjusted through the web interface or Modbus, allowing the GLACIÄR RM to be easily adapted to suit the installation.



## SIMPLY RELIABLE ROOM MONITORING



Article No.	Model	Details	PG
3101-0001	GLACIÄR RM R410a	IR, R410a, 7%Vol	G
3101-0002	GLACIÄR RM R32	IR, R32, 50%LFL	G

For more information see [www.samon.com](http://www.samon.com)