

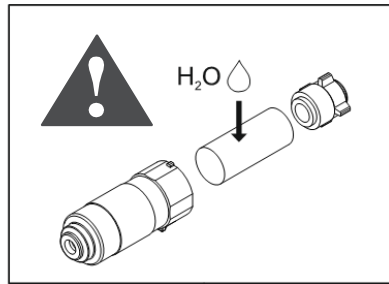
GLACIÄR MIDI CALIBRATION KIT

Instruction sheet



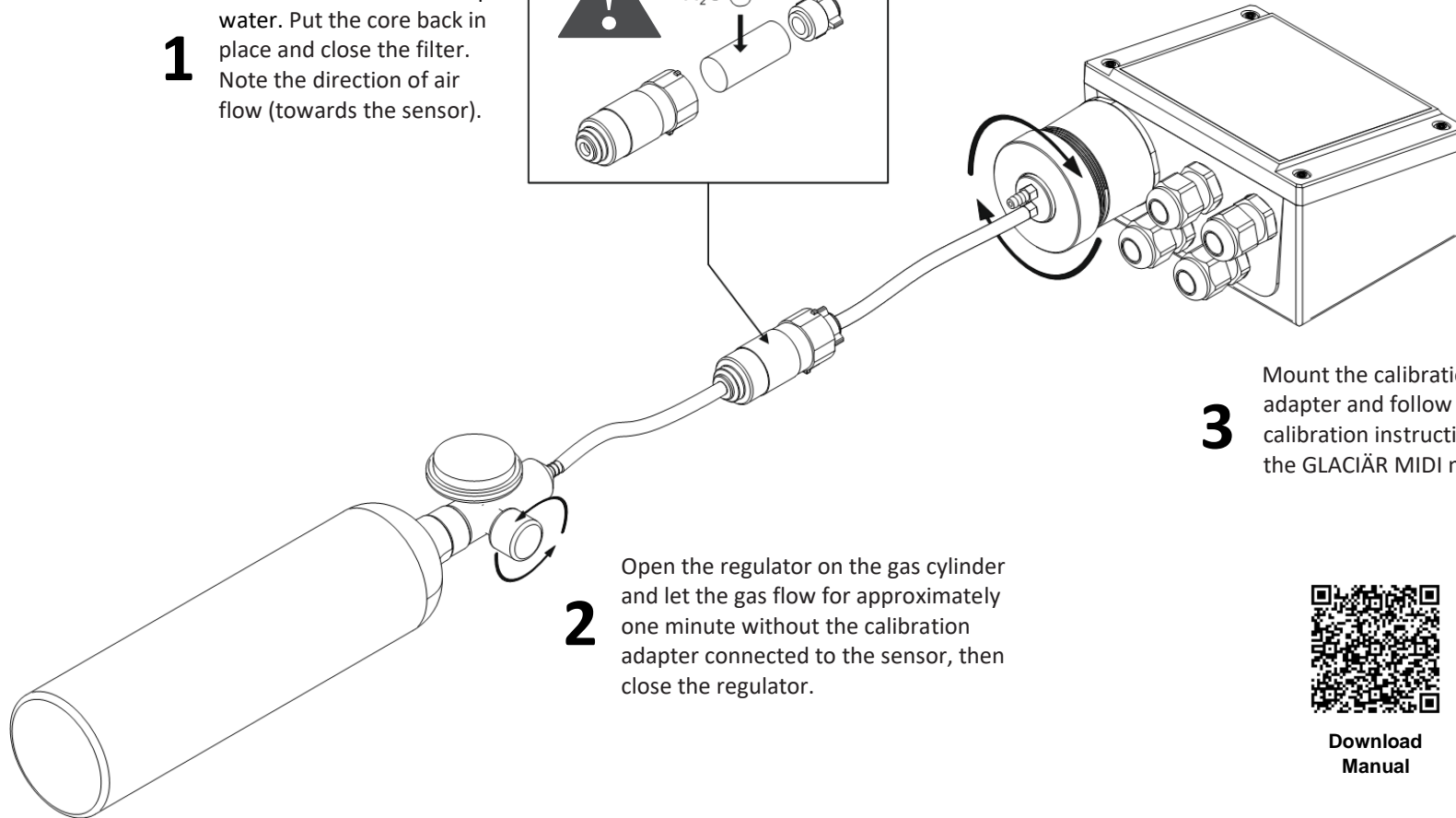
1

Wet the filter core with tap water. Put the core back in place and close the filter. Note the direction of air flow (towards the sensor).



2

Open the regulator on the gas cylinder and let the gas flow for approximately one minute without the calibration adapter connected to the sensor, then close the regulator.



3

Mount the calibration adapter and follow the calibration instructions in the GLACIÄR MIDI manual.



Download
Manual